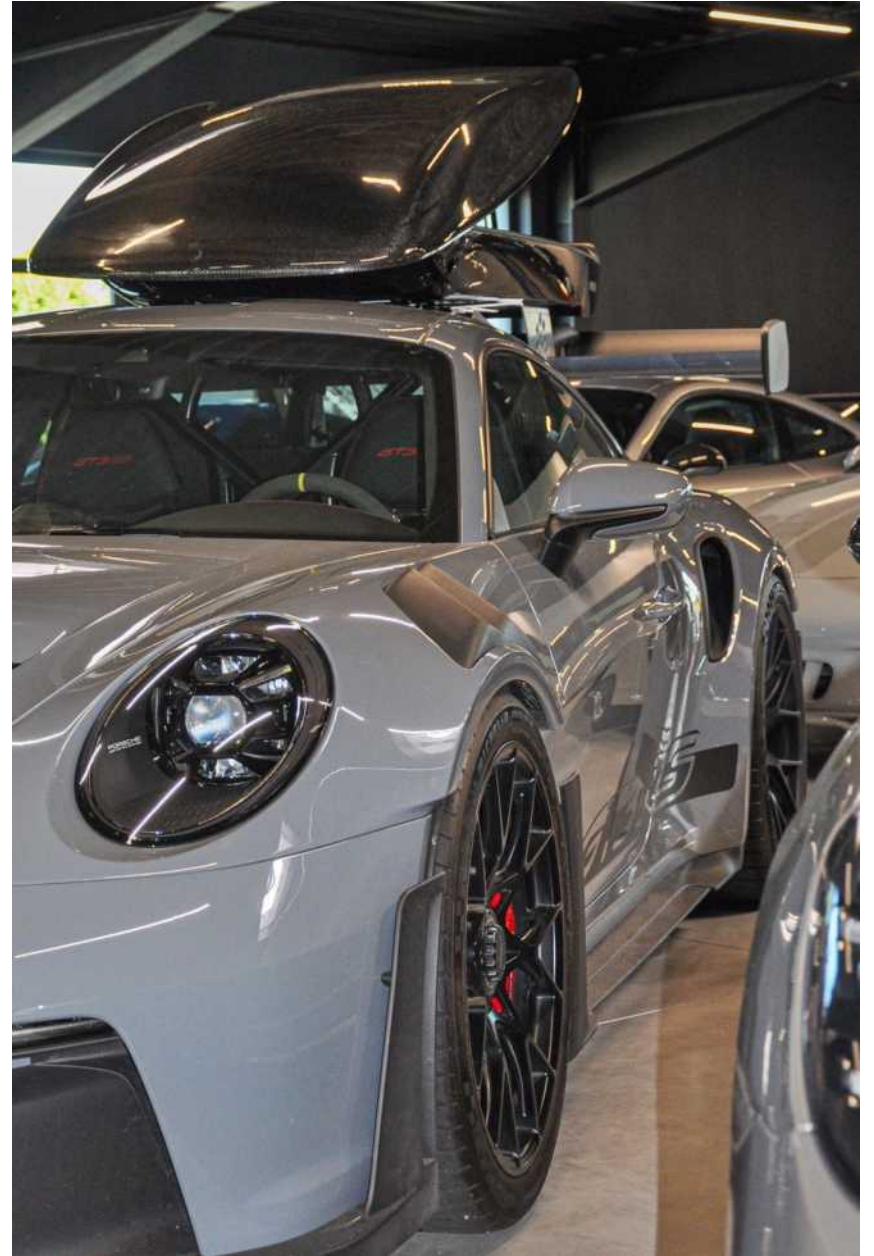


# ASPHALTKIND

Performance roof box made of full carbon.





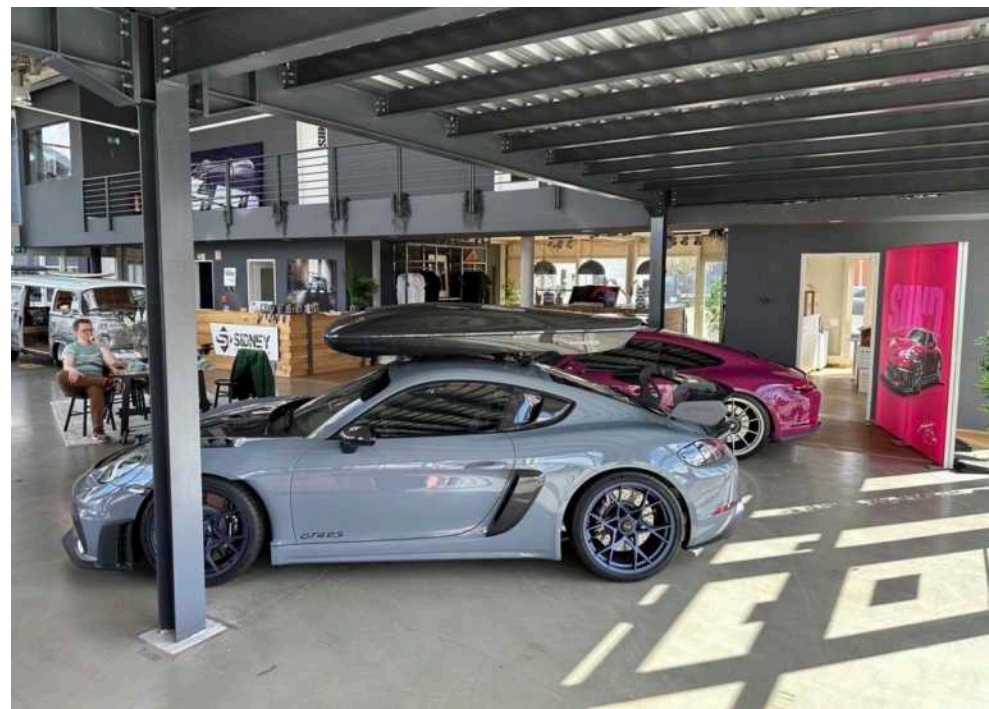


In-house developed carrier system for the Porsche 992 GT3 RS



In-house developed carrier system for the Porsche 991 GT3 RS

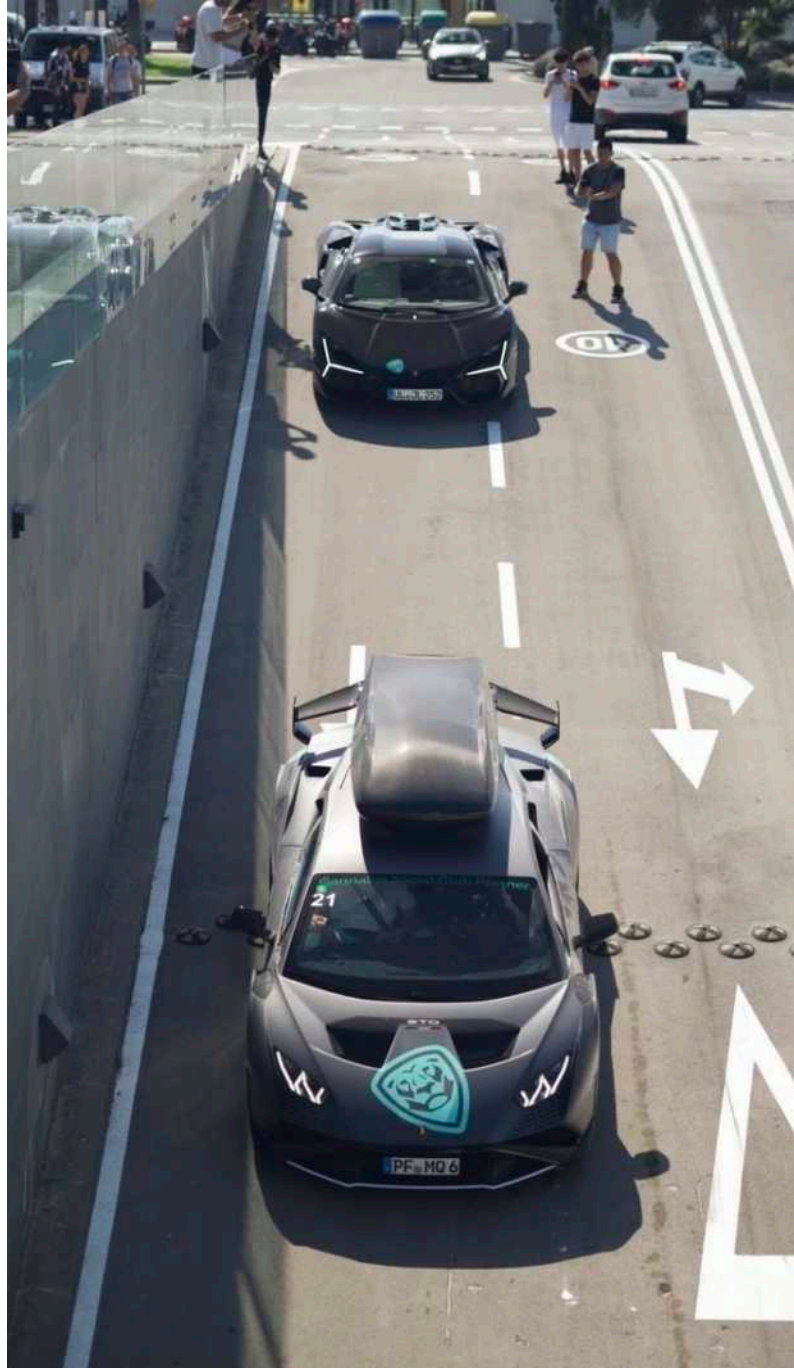












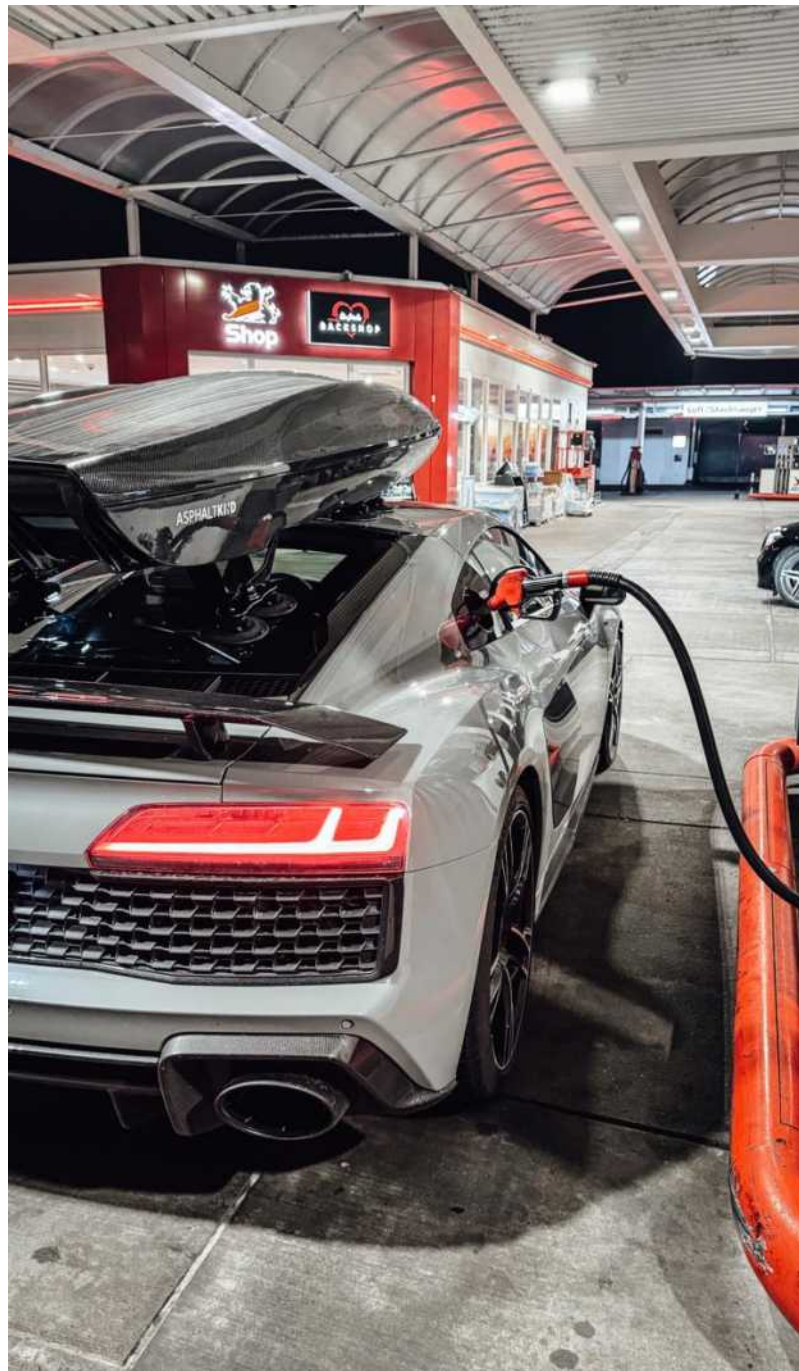
In-house developed carrier system for the Lamborghini STO















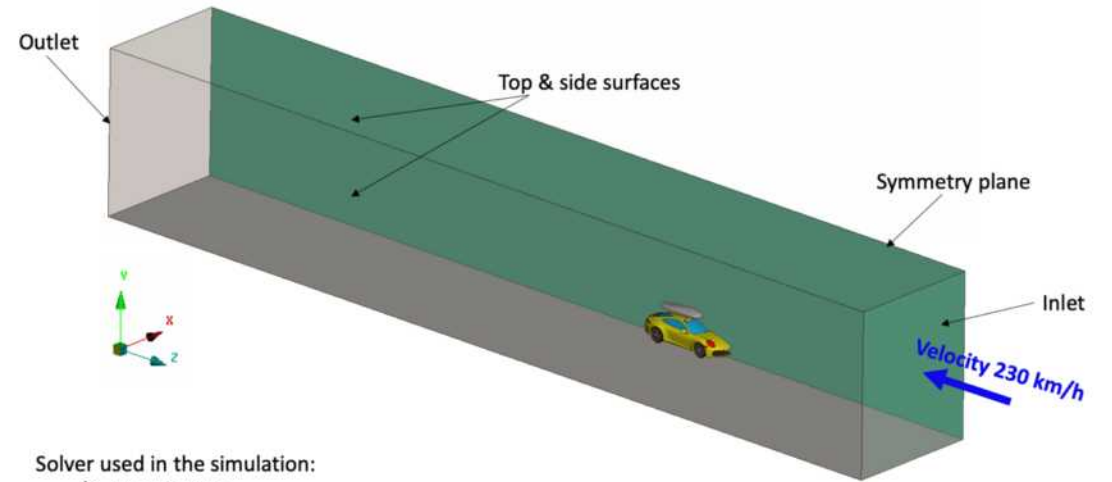
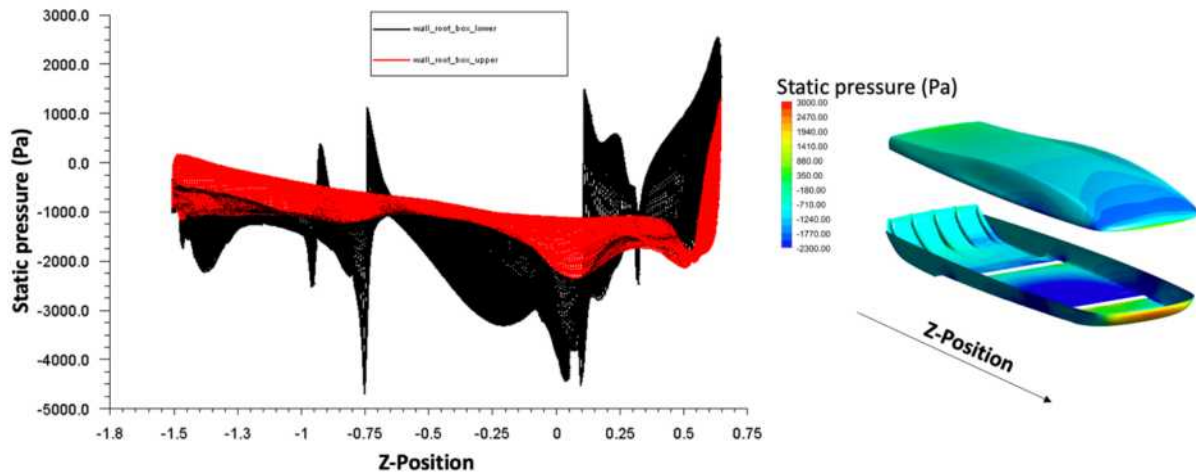
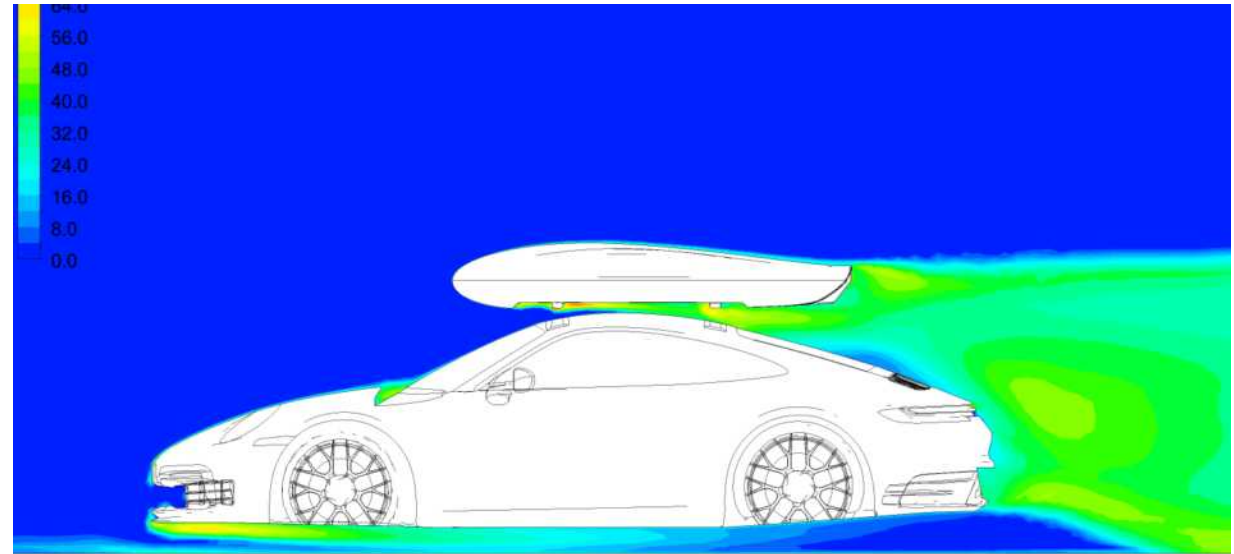
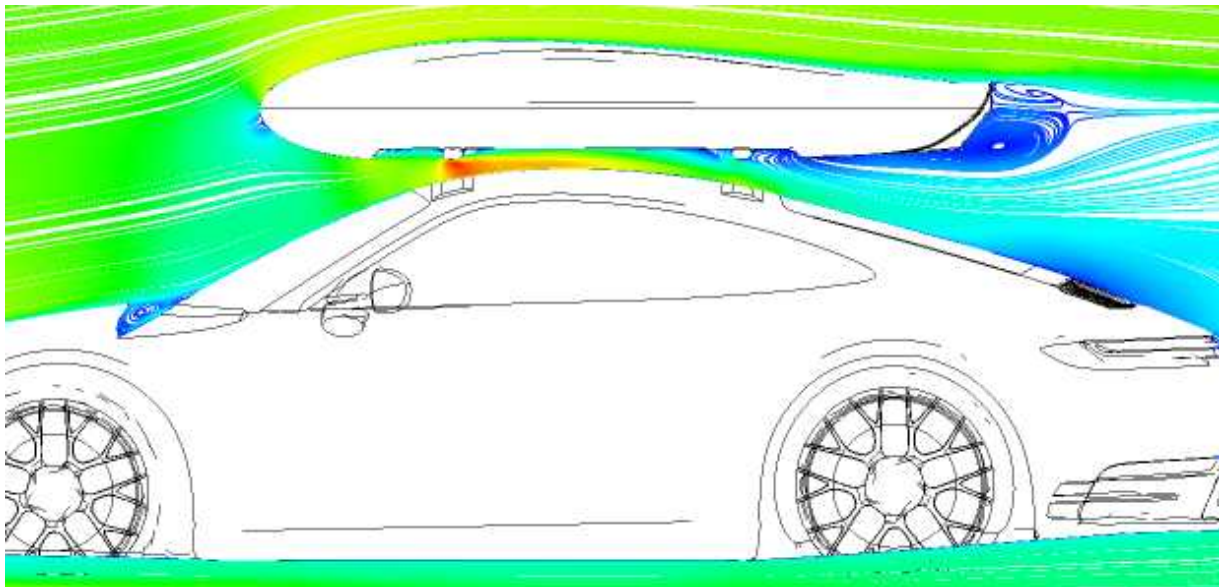












- Solver used in the simulation:
- Steady state.
  - Viscous model : k-epsilon.









Engineered and handmade in Dortmund.

#### Keyfacts:

- Dimensions: 215 x 90 x 32 cm
- Volume: 400 Liter
- Material: Full Carbon
- CW-Value: 0,11
- Highlight: Electrical locking system
- Price: start at 7.135 € (net)
- Design: „Shaped by performance“

#### Further information:

- Website: [asphaltkind.de](https://asphaltkind.de)
- Instagram: [asphalt.kind](https://www.instagram.com/asphalt.kind)
- YouTube: [ASPHALTKIND](https://www.youtube.com/ASPHALTKIND)

#### Contact:

- Nils Freyberg (Founder & CEO)
- +49 162 7108243
- [freyberg@asphaltkind.de](mailto:freyberg@asphaltkind.de)

#### Investors & Partners:

- Interested in accelerating (us)?: [freyberg@cropfiber.de](mailto:freyberg@cropfiber.de)
- New project at the starting line: [ASPHALTKIND Racing](https://www.asphaltkind.de/racing)

**Always deliver more than expected:**

Wir sind auch im Möbel- und B2B-Bereich aktiv.

*Hierbei auch mit Naturfasern (Cropfiber-Material)*

---

**Always deliver more than expected:**

We are also active in the furniture and B2B sectors.

*Also with natural fibers (cropfiber material)*



